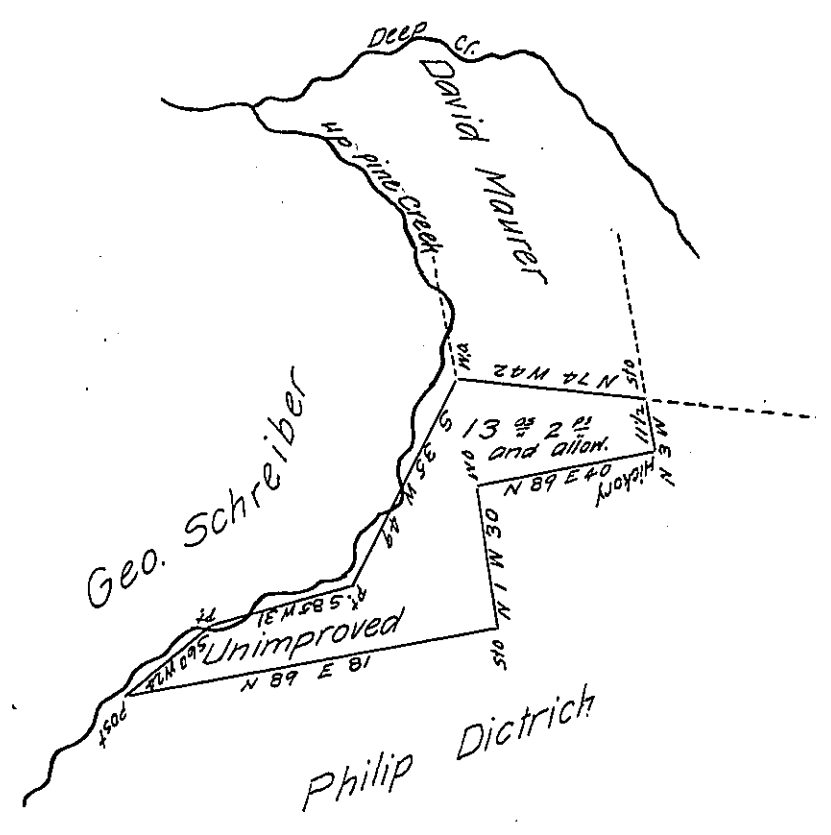


FORM NO. 1.



Situate in Lower Mahantongo township, Schuylkill county containing thirteen acres and two perches and the allowance of six per Centum, surveyed on the 20<sup>th</sup> day of December 1826 in pursuance of a warrant dated the 9<sup>th</sup> day of December 1826 granted George Schreiber.

To Gabriel Hiester Esquire

F. Lauderbrum

Surf. Genl. of Penna

D.S. of S. Co.

IN TESTIMONY that the above is a copy of the original remaining on file in the Department of Internal Affairs of Pennsylvania, made conformably to an Act of Assembly approved the 16th day of February 1833, I have hereunto set my hand and caused the Seal of said Department to be affixed at Harrisburg, this thirty first day of December 1906

*Loach N. Brown*  
Secretary of Internal Affairs.